

**Friday May 4th**  
**Epcot® International**  
**Flower & Garden Festival**  
**Orlando, Florida**

*The* **Magic**   
*of*  
**Landscapes**



Featuring

- Carol R. Johnson, FASLA
- Donald Martin, AICP
- Southern Land Company
- New Research
- New Exclusive Tours
- Up to 10 CE Credits
- VIP viewing IllumiNations:  
Reflections of Earth

**Create Value for your Projects with Quality Landscapes.**



**ULI Orlando**



**The Magic of Landscapes** will show you how to create value for your development projects with quality landscapes. Learn to evaluate and quantify the value of quality landscapes. Discover the extensive research conducted at leading universities and learn from the experience of outstanding leaders in urban planning, landscape architecture, and real estate development. Experience the spectacular *Epcot*® International Flower & Garden Festival and enjoy exclusive behind-the-scenes tours of the Walt Disney World® Resort world class landscapes.

## **Carol R. Johnson, FASLA**

Carol R. Johnson is the founder and Chairman of the Board of Carol R. Johnson Associates, Inc. For 47 years she has maintained a diverse professional practice in the areas of landscape architecture and site planning. Typical work which she has overseen within the firm includes site development, open space and recreation planning, master planning and urban development for municipalities, schools, colleges and universities, corporations and public agencies. In October of 1998, Ms. Johnson received the American Society of Landscape Architects' ASLA Medal, the Societies highest honor. In January of 2000, she received a Gold Medal from the Massachusetts Horticultural Society.



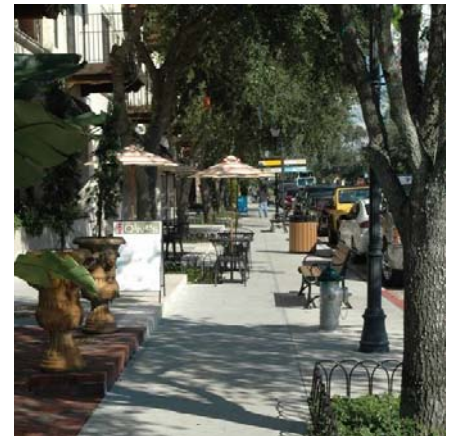
Between 1966 and 1973, Ms. Johnson taught at the Harvard University Graduate School of Design. She was a member of the Loeb Fellowship Advisory Council at Harvard between 1984 and 1986. She has lectured at many colleges and universities, both in the U.S. and abroad, including Universities of Pennsylvania, Pennsylvania State, Virginia, Guelph, Minnesota, Michigan, Illinois, North Carolina A&T University, SUNY at Syracuse, Ball State, the Massachusetts Institute of Technology, Rhode Island School of Design, the University of Nairobi, the Royal Academy in Copenhagen, the Technical University of Nova Scotia, and six universities in Taiwan, Republic of China.

---

## **Donald S. Martin, AICP**

Don brings over 20 years of urban planning experience in both governmental and private consulting realms. Over the last 13 years, he directed the City of Winter Park's Planning and Community Development Department, leading the community through a renaissance that raised its profile to one of national prominence as a quintessential urban village. In his capacity as planning director, he created a vision and oversaw completion of numerous projects which implemented that vision.

Don has authored feature articles in an array of diverse publications, including *Urban Land Institute's Urban Land* magazine, the *National Civic Review*, and the *2005 Guidebook* published by the Florida Chapter of the Congress for New Urbanism.



---

## **Southern Land Company**

Southern Land Company has completed or is in the process of developing 17 communities with a total investment value of \$1.7 billion. The company is known and well respected for its perseverance to produce a product that surpasses the needs of clients. Horticulture and landscape architecture feature prominently in Southern Land Company's vision of community design. As a vertically integrated company, Southern Land Company employs a complete staff of landscape architects, horticulturalist and landscape construction crews. Ben Crenshaw –Vice President of Landscape Architecture and Jim Cheney - Director of Communications will share Southern Land Company's experience at the Magic of Landscapes 2007. [www.southernland.com](http://www.southernland.com)



## Walt Disney World® Resort Landscape Tours:

### 1. Rooms with a View: Resort Entrance Design Study

Join members of the Disney's Horticulture staff and landscape architects on a behind-the-scenes-bus tour of the Walt Disney World® Resort grounds. From theme parks to resorts and vacation clubs, learn how Disney's horticulturalists have used entrances and roadways to brand developments and announce the theme and character of a place. Get an inside look at how landscaping has been used to create a sense of arrival, inviting guests into a development, and building a sense of excitement for what lies beyond the threshold.

### 2. Sharing Lessons Learned: Design through Installation and Beyond

Spend a morning at one of our newest resort locations to discuss the knowledge acquired over many years of project construction. See specific design and installation details implemented by Disney's Horticulture that ensure maintainable themed landscapes for years to come.

### 3. Epcot® International Flower & Garden Festival Tour

Take time to smell the roses on this exclusive walking tour of the Epcot® International Flower & Garden Festival. Your guide will take you on an around-the-world tour of horticulture and landscape design elements as you explore the gardens, displays and exhibits of the Festival. Ask questions about the use of specific plants, maintenance issues, design elements, or simply relax and enjoy a beautiful spring morning in the park.

---

### Optional Speaker Dinner Package:

Participants may choose to include a *Speaker Dinner Package*. Enjoy dinner Friday evening at one of the themed restaurants located in World Showcase at Epcot®, hosted by one of our speakers or Magic of Landscapes board members.

Cost is \$65 and includes dinner and a glass of wine or beer.

*Space is limited. - Once you register you will be contacted by FNGLA so that you may select the speaker or board member with whom you would like to dine with.*

---

### Optional Thursday Afternoon Session:

*Landscape Tour of Rollins College. (CEU course #0008200)*

Discover the world-class landscapes of Rollins College on this educational walking tour. Join George H. Herbst, Vice President & Treasurer of Rollins College, Scott Bitikofer, Director of Facilities Management, and Laura Coar, Manager of Landscape and Grounds, who is also a Walt Disney World® Horticultural Alumnus. They will tell the stories of the landscape, the architecture and the challenges of creating a high quality experience that starts with the outdoor space. Enjoy a refreshment break at the Barker House, home of the Rollins College Presidents, where you will have the opportunity to discover one of Carol R. Johnson's signature landscapes.

**Earn an Additional 4 CEUs for attending Thursday Session!**

## Agenda: Friday May 4th

9:30-10:00 Arrival & Welcome

10:00 to 12:30 Tour (Select One)

- Rooms with a View
- Sharing Lessons Learned
- Epcot® International Flower & Garden Festival Tour

12:30 to 1:15 Lunch

1:15 to 2:15 Donald Martin, AICP

2:15 to 2:30 Facilitated Discussion

2:45 to 3:45 Southern Land Company

3:45 to 4:00 Break

4:00—5:00 Carol R. Johnson, FASLA

5:00 to 6:00 Cocktail Reception

6:00 to 9:00 Dinner on Your Own  
or *Optional Speaker Dinner*

9:00 VIP viewing of IllumiNations:  
Reflections of Earth



## Agenda: Thursday May 3rd (Optional Program)

2:30 to 2:45 Arrival & Welcome

2:45 to 4:30 Tour of Rollins College

4:30 to 5:30 Barker House Reception

- 5:30 Adjourn

## 2007 Magic of Landscapes Registration Form

For multiple attendees please fill out multiple forms or register online at [www.magicoflandscapes.com](http://www.magicoflandscapes.com)



Attendee name \_\_\_\_\_

Company name \_\_\_\_\_

Address \_\_\_\_\_

City \_\_\_\_\_ State \_\_\_\_\_ Zip \_\_\_\_\_

Phone \_\_\_\_\_ Fax \_\_\_\_\_

Email \_\_\_\_\_

Friday May 4 Magic of Landscapes 2007			Friday Tour (Select One)			Optional Speaker Dinner Package	Thursday May 3 Optional Tour Rollins College		
Early Registration by April 27	Late Registration after April 27	Full Time Student	Rooms with a View	Sharing Lessons Learned	Flower & Garden Festival Tour	<i>Space is limited</i> FNGLA will contact you for speaker selection. <b>\$65</b>	Early Registration by April 27	Late Registration after April 27	Full Time Student
<b>\$185</b>	<b>\$215</b>	<b>\$100</b>					<b>\$35</b>	<b>\$45</b>	<b>\$20</b>

Payment amount: \$ \_\_\_\_\_ **Make checks payable to FNGLA**

Method of payment: \_\_\_\_\_ Check \_\_\_\_\_ MC \_\_\_\_\_ Visa \_\_\_\_\_ Amex

Card # \_\_\_\_\_ Exp date: \_\_\_\_\_

Name on card \_\_\_\_\_

Billing address (if different than above):

Address \_\_\_\_\_

City \_\_\_\_\_ State \_\_\_\_\_ Zip \_\_\_\_\_

Signature \_\_\_\_\_

\_\_\_\_\_ Please check here if you require special accommodations to fully participate \_\_\_\_\_ Please check here if you would prefer a vegetarian meal

Fax registration forms to 407-295-1619 or Mail to: FNGLA, 1533 Park Center Drive, Orlando FL 32835 Questions – call 407-295-7994  
Additional registration forms are available at [www.magicoflandscaping.com](http://www.magicoflandscaping.com)

### Continuing Education Credit

This event is approved by the Florida Department of Business and Professional Regulation for 6 hours of Continuing Education Credit for Florida Landscape Architects.

Provider # 0002080

Course # 0008201

An additional 4 hrs of Continuing Education Credit for Florida Landscape Architects is available for the *Landscape Tour of Rollins College*.

Provider # 0002080

Course # 0008200

### Hotels

Conference attendees can receive a special conference rate at one of the following Walt Disney World® hotels:

- All-Star Music — \$85/night
- Coronado Springs — \$120/night
- Wilderness Lodge — \$198/night
- BoardWalk Inn— \$220/night

Call 407-938-4868 by April 13, 2007 to receive these special rates.

Register online at [www.magicoflandscapes.com](http://www.magicoflandscapes.com)

### FNGLA

1533 Park Center Dr  
Orlando, Fl. 32835